



1.3M HD CAMERA

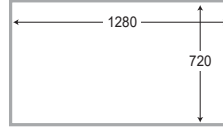
CS-60XXMT



- HD
- WDR color CMOS
- Die-casting housing
- Waterproof (IP69K)
- 6 pcs of IR LEDs for night
- Photo sensor

Resolution

1280x720



IR LEDs for night



Parking Line (Option)



WDR

Infrared rearview camera has wide visual field and prevent accident in the rear of vehicle by realtime clean image even night.



Day

Cloudy

Night

MODEL NAME & VIEW ANGLE

CS-6004MT
60(H) / 35(V) / 69(D)

CS-6009MT
89(H) / 52(V) / 103(D)

CS-6012MT
118(H) / 67(V) / 137(D)

CS-6015MT
154(H) / 87(V) / 177(D)

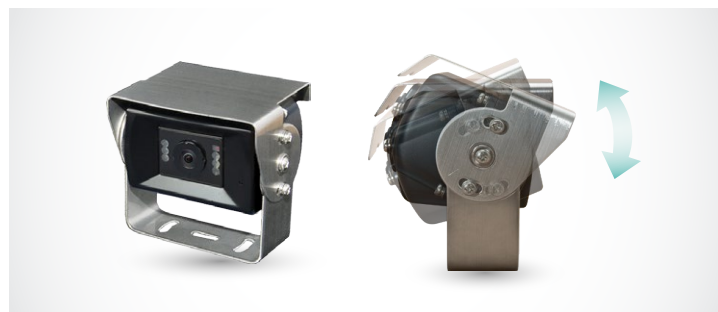
DIMENSIONS & CABLE

NO	CONNECTION
01	POWER
02	GROUND
03	T_VIDEO_P
04	T_VIDEO_N

SPECIFICATION

DEVICE	IMAGE DEVICE	1.3M WDR SENSOR 1/3"	
	IMAGE PIXEL SIZE	3.75 μ m (H) x 3.75 μ m (V)	
	RECORDING PIXEL	1,280(H) x 720(V) 1.2MPixel	
	SIGNAL FORMAT	HD	
	ASPECT RATIO	16:9	
	FRAME RATE	30fps	
	SCAN MODE	Progressive	
	TV SYSTEM	NTSC TV SYSTEM	
	IMAGE FREQUENCY	HORIZONTALITY	15.734KHz
		VERTICAL	59.94Hz
	VIDEO OUT	HD video-out	
	HORIZONTAL RESOLUTION	1000 TV Lines	
	S/N RATIO	More Than 50dB (AGC OFF)	
	WHITE BALANCE	Auto	
	OUTPUT	VIDEO PORTS	Exclusive 6 pin connector
		VIDEO TYPE	MIRROR OR NORMAL
	MIC	X	
	IR LED / PHOTO SENSOR	IR 6ea / Photo sensor 1ea	
	VIEW ANGLE	CS-6004MT	60(H) / 35(V) / 69(D)
		CS-6009MT	90(H) / 52(V) / 103(D)
CS-6012MT		118(H) / 67(V) / 137(D)	
CS-6015MT		154(H) / 87(V) / 177(D)	
MIN. ILLUMINATION	IR ON 0 Lux		
INPUT VOLTAGE	DC 12-24V (MAX 30V)		
OPERATING TEMPERATURE	-20 $^{\circ}$ C ~ 70 $^{\circ}$ C		
STORAGE TEMPERATURE	-30 $^{\circ}$ C ~ 80 $^{\circ}$ C		
WATERPROOF	IP69K		
DIMENSION	70(W) x 44(H) x 57(D)mm (w/o Bracket)		
WEIGHT	202g (w/o Bracket)		
CABLE LENGTH	1.0m		
BOX CONTENTS	BRACKET · SUNVISOR	O	
	SCREWS SET	O	
	EXTENSION CABLE	Option	
	MANUAL	O	

UP/DOWN CONTROL BRACKET



CABLE CONNECTION

